

ANTEBELLUM

↔ Manufacturing ↔



D&D Technologies®
World's most trusted gate hardware

Gate Hardware

ANTEBELLUM
↔ Manufacturing ↔

1120 N Magnolia Avenue, Ocala, FL 34475
www.antebellummfg.com | (352) 877-3888 | info@antebellummfg.com

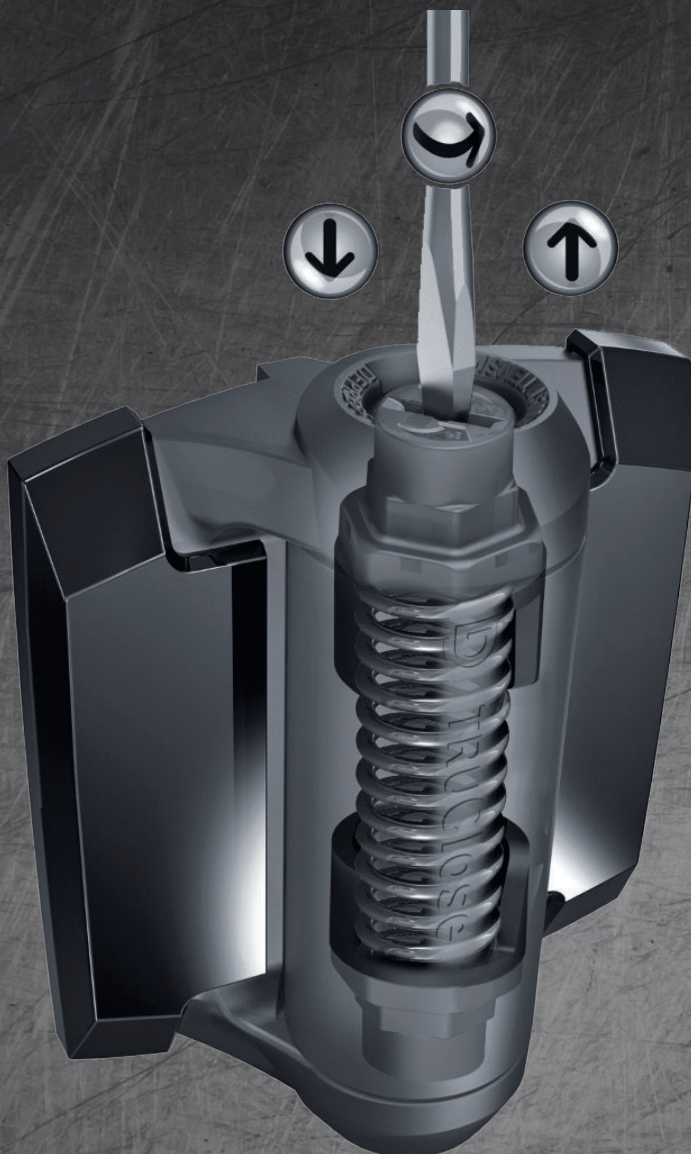
ANTEBELLUM

Manufacturing



Quick And Easy To Install. Patented Self-Closing Tension Adjustment.

Reliable and durable self-closing gate hinges perfect for homes, swimming pools, child care centers or wherever safety is a priority.



Patented tension adjustment

Quick and easy tension adjustment (closing force) using a large screwdriver at either end of hinge barrel.

Molded hinge body

No rust, binding, sagging or staining! Constructed from UV-stabilized, industrial-strength polymer.

Internal stainless steel spring

High-quality, stainless steel spring provides reliable closure and lasting performance.

Reinforcement ribs

Molded ribs provide superior torsional and lateral leaf strength.

Optional alignment legs

Models with and without quick-fit alignment legs for fast, convenient installation and added fixing strength.

Concealed Fasteners

Clip-on leaf trim covers hide the fasteners to provide a clean, contemporary finish and enhance gate style.



TCHD1AL2S3

D[®] TRUClose[®] HEAVY DUTY

Adjustable, Self-Closing Hinges for heavy/ high-traffic gates up to 155 lb

- Suitable for use on pool and child safety gate applications
- D&D-patented tension adjustment
- Won't rust, bind, sag or stain
- Adjust tension from either end (adjustment always facing up)
- UV-stabilized, industrial-strength polymer construction
- Self-lubricating durability; requires no maintenance
- Self-closing hinges for heavy/high-traffic gates up to 155 lb
- Trim cover options - Gloss Black or White

D[®] TRUClose[®] REGULAR

Adjustable, Self-Closing Hinges for gates up to 66 lb

- Ideal for pool and child safety gate applications
- D&D-patented tension adjustment
- Won't rust, bind, sag or stain
- Adjust tension from either end (adjustment always facing up)
- UV-stabilized, industrial-strength polymer construction
- Self-lubricating durability; requires no maintenance
- Self-closing hinges for gates up to 66 lb
- Trim cover options - Gloss Black or White



TCA1



KF3A
Wall or post mount

KF3L2
2 side fixing legs

D[®] KWIKFit[™] ALUMINUM

Traditionally styled, Self-closing, Aluminum gate hinges up to 44 lb

- Traditionally styled, self-closing hinges
- Aluminum construction with powder-coated finish
- Internal stainless steel closing spring
- Tension adjustment from either end
- Low-friction polymer bushes for smooth closure
- Self-closes gates up to 44 lb
- Color options - Black, Bronze or White

ANTEBELLUM Manufacturing



MAGNALatch®



LOKKLatch®

High Performance Gate Latches & Locks

Revolutionary MagnaLatch® Safety Gate Latch sets new standards for self-closing and self-latching child, swimming pool and pet gate safety.



MAGNALatch® Series 3

Industry leading safety features

The Original Magnetic Child Safety gate latch

- The world's most trusted safety gate latch
- Ideal for residential or commercial safety gates
- Improved, stylish "Series 3" design
- Industry leading magnetic latching technology
- "Red dot" indicator shows Locked/Unlocked status
- 6-pin lock for higher security (rekeyable, to match doors)
- Vertically & horizontally adjustable
- Alignment marks indicate when adjustment is required
- Color options - Black or White



ML3TPKA



ML3VPKA



MAGNALatch® ALERT

The ultimate gate protection

Safety Gate Latch with ELECTRONIC ALARMS

- World's ONLY safety gate latch with built-in electronic alarms
- Visual and audible alarms (flashing LEDs + sound alert)
- No wiring or electricians required (easy installation)
- Single alert beep each time gate is entered/exited
- Alarms notify if gate is open or not securely latched
- Full alarm mode only if gate left open 15+ seconds
- Optional: Touch-sensor disarm feature
- Long-life lithium battery included
- IP55 rating – tested to withstand dust and water in mechanism



ML3AVPKAG2



LOKKLatch® | **MAGNETIC**

Lockable, dual-sided Push/Pull Handle

- Operates and locks from both sides of gate
- Ergonomic Push/Pull handled design
- Requires only one drilled hole through post
- Proven magnetic latching technology
- Black trim covers included (metallic options)
- No visible fasteners
- Keyed-alike or keyed different options
- Dual 6-pin rekeyable locks
- Vertically & horizontally adjustable
- Fits fence posts 1½"–6" (38–150mm) deep
- Trim cover options - Gloss Black



LLMKABT



LLAA



LOKKLatch® | **REGULAR**

World's most trusted privacy and security gate latches.

- Constructed from industrial-strength polymer
- 316 marine-grade stainless steel components
- No rusting or staining
- For metal and wood gates
- Vertically and horizontally adjustable
- Quick and easy installation
- All fasteners included
- Fits fence posts 1½"–6" (38–150mm) deep
- Color options - Black or White



LOKKLatch® | **DELUXE³**

PREMIUM Privacy & Security Gate Latch

- Operates and locks from both sides of gate
- New 'fitting jig' provides easier, faster installation
- New ball-joint Connecting Rod simplifies installation
- Two latch-bolt lengths (models) for different gates
- Requires only one drilled hole through post
- Keyed-alike or keyed different options
- Dual 6-pin locks can be rekeyed to match doors etc.
- Vertically & horizontally adjustable
- Industrial-strength polymer construction
- Fits fence posts 1½"–6" (38–150mm) deep
- Minimum post width 1½" (38mm)
- Color options - Black or White



LLD3

**SHUTIt®****BADASS™**

Heavy duty hinges tested to over 1 million cycles. Adjustable and powder-coatable.

Heavy duty shaft (bolt)

On all hinges; gives the highest weight rating in the industry

Precision bushing

Distributes gate load for optimal performance and longer life

Zinc electroplating

- Inhibits rust and corrosion
- No need to grind off before welding
- On all components except stainless steel, aluminum and 'rusted look'

Tightest tolerances in the industry

- CNC machined to perfection
- Virtually frictionless rotation

Post bracket

- Horizontally adjustable for accurate installations
- Precision machining that fully utilizes the adjustment slots and maximizes welding surfaces

Hinge Body (on gate)

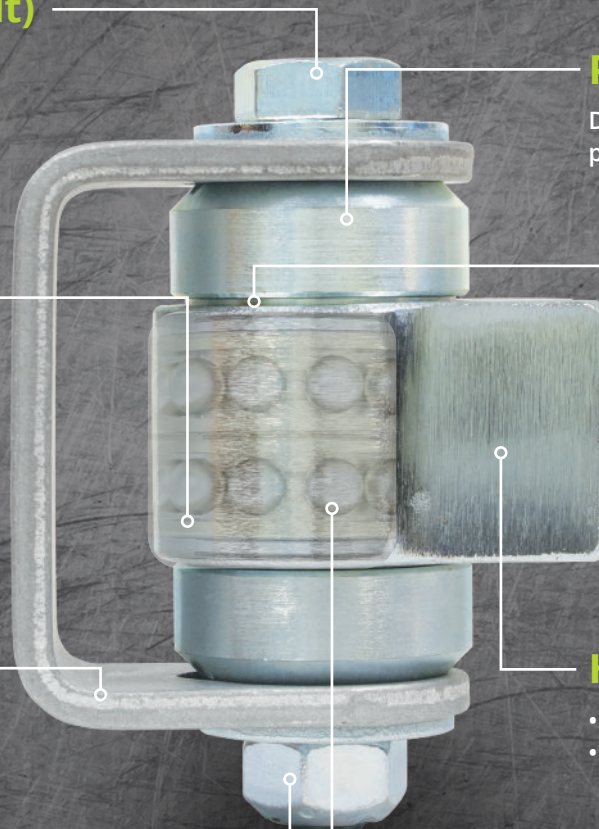
- Fits round or flat surfaces
- Decorative, brushed finish

Unique Stover™ locknut

- Innovative, shaped threads provide a vibration-resistant friction fit so nut stays firm
- Top thread section is deformed to create two or three locking zones (can be re-used 2-3 times)
- All-metal locknuts withstand higher temperatures than nylon-insert locknuts

High-temp sealed bearings

- Safe to powder-coat with hinges installed on gate (excluding CI3850 self-closing hinge and CI3800 Stainless Steel BadAss)
- No greasing, no maintenance.
- Hinge options with 1, 2, 3 or 4 bearings
- Performs better than roller cages that require periodic greasing





CI3400

Shut It® Aluminum BadAss™

- Made to weld
- High-temperature sealed bearings – safe to powder coat with hinges installed on gate
- No greasing or maintenance required on sealed bearings. EVER!
- Horizontal adjustability for perfect installations
- Ideal for flat post installation
- Load rating per gate: 1,000 lb (450kg)
- Maximum gate weight: 600 lb (270kg)



CI3700

Shut It® Bolt-On BadAss™

- Designed for gates where welding is not an option
- High-temperature sealed bearings – safe to powder coat with hinges installed on gate
- No greasing or maintenance required on sealed bearings. EVER!
- Horizontal adjustability for perfect installations
- Flat, bolt-on brackets for through bolting
- Zinc plated
- Load rating per gate: 2,000 lb (900kg)
- Maximum gate weight: 1,000 lb (450kg)



CI3740A

Shut It® 4" Aluminum Half Bolt-On BasAss

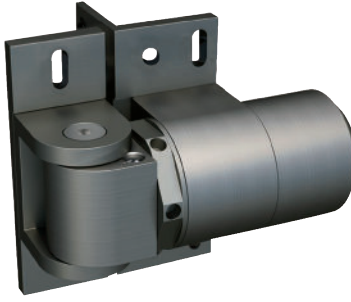
- Made to bolt to 4" or 6" fence posts
- Wider brackets enable anchor points to be positioned at the sides, rather than center of fence post - reducing flexing, preventing fatigue in fence post
- High-temperature sealed bearings - safe to powder coat with hinges installed on gate
- No greasing or maintenance required on sealed bearings. EVER!
- Precision bushing - distributes gate load for optimal performance and longer life
- CNC machined to perfection and near frictionless movement
- Max Gate Load: 1,000 lb (450 kg)
- Max Gate Weight: 600 lb (270 kg)



CI3760A

Shut It® 6" Aluminum Half Bolt-On BasAss

- Made to bolt to 6" or larger fence posts
- Wider brackets enable anchor points to be positioned at the sides, rather than center of fence post - reducing flexing, preventing fatigue in fence post
- High-temperature sealed bearings - safe to powder coat with hinges installed on gate
- No greasing or maintenance required on sealed bearings. EVER!
- Precision bushing - distributes gate load for optimal performance and longer life
- CNC machined to perfection for near frictionless movement
- Max Gate Load: 1,000 lb (450 kg)
- Max Gate Weight: 600 lb (270 kg)

**SUREClose®****READYFit****74001315T
HINGE ONLY****74108325T
HINGE-CLOSER****7403 RF
GATE STOP**

CODE	DESCRIPTION	SOLD AS	MATERIAL & MOUNTING	MAX. OPENING ANGLE	Configuration for Maximum gate weight 1,500 lb (860kg) ¹ . Access Control.
74001315T	Plain Pivoting Hinge	Single Hinge	Steel Weld or Screw	178°	74001315T + 74001315T (Not self-closing)

Note: Minimum fence post size 2" (50mm). Gap variance for all models ½ to 1 ¾" (12–35mm). Do not exceed gap of 1 ¾" (35mm)

CODE	DESCRIPTION	SOLD AS	MATERIAL AND MOUNTING	MAX. OPENING ANGLE	SELF-CLOSING FROM	REQUIRES GATE-STOP	Self-closes gates up to 180 lb (80Kg) ¹	Self-closes gates up to 260 lb (120kg) ¹
74108325T ⁴	Hinge-Closer – safety model	Single	Steel Weld or Screw	88°	88°	Yes ²	74108325T + 74001315T	74108325T + 74108325T
7403	READYFIT GateStop	Single	Steel Weld or Screw	85°	N/A	N/A	N/A	N/A

¹ Based on maximum gate size 72"H x 40W (1800x1000mm).

For gates with greater HxW, or if weather conditions such as wind play a role, use hinge combinations with higher self-closing weight ratings.

² **CAUTION:** Not suitable child/pool gates unless a gate-stop is installed at a maximum of 170° opening. DO NOT PROP GATE OPEN.

³ **CAUTION:** When used on swimming pool gates, always consult local authorities for swimming pool Codes.

A gate-stop MUST be installed when using safety models. Gate MUST NOT be allowed to open past 90°. Doing so voids warranty.

⁴ **MEETS ADA REQUIREMENTS** for gate opening and closing angles and self-closing speed.



ANTEBELLUM

↔ Manufacturing ↔

1120 N Magnolia Avenue, Ocala, FL 34475

www.antebellummfg.com

352.877.3888

info@antebellummfg.com