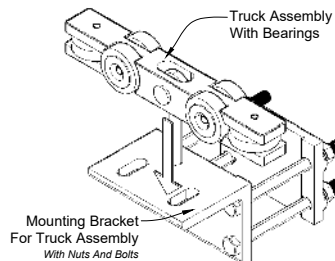
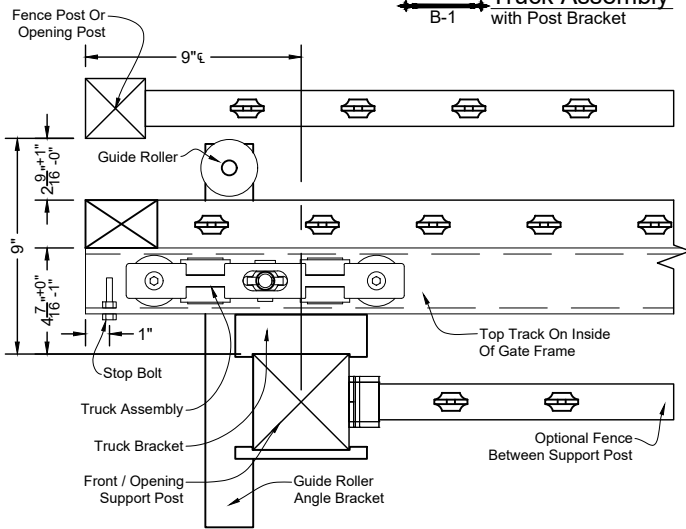


Detail Elevation & Section Views
A-1 Shown As Commercial

* Before Mounting Truck Assembly And Bracket To Support Post, Make Sure Post Are Set And Concrete Has Hardened. Attach Bracket To Post At Required Height (Accounting For Your Ground Elevations). Install Truck Assembly In One Of The Two Slotted Holes On The Bracket (It's Recommend To Use The Hole Closest To Opening On The Front Support Post And The Opposite For The Rear Support Post). See **Detail A-4**. The Truck Assembly Should Allow About $1\frac{1}{2}$ " Of Vertical Adjustment And The Slotted Hole On The Bracket Will Allow About $1"$ Of Horizontal Adjustment. Slide Gate Into Place And Install Your Stop Bolts At Both Ends Of The Track.

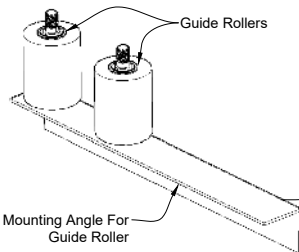


Detail Truck Assembly
B-1 with Post Bracket

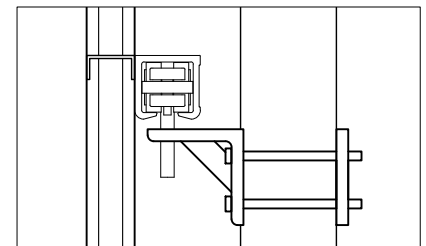


Detail Support Post Location
A-4 Gate Shown In Open Position

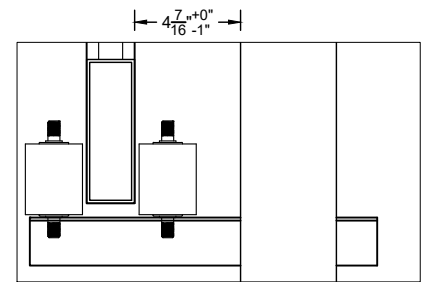
* Make Sure Your Support Post Are Plumb And Install Your Bottom Guide Roller Assembly To Both Post. If You Have An Operator, Take Into Account Your Operators Chain And Mount Hardware. The Angle Mounts Have Predrilled Holes For Guide Rollers That Should Give A Gap Between The Gate And Rollers. Do Not Press Rollers Tightly Against Gate, This Will Cause The Gate Operation To Be Stiff. Once These Are Mounted To Post, You Can Level The Gate Or Adjust Overall Height By Adjusting The Truck Assembly, If Necessary.



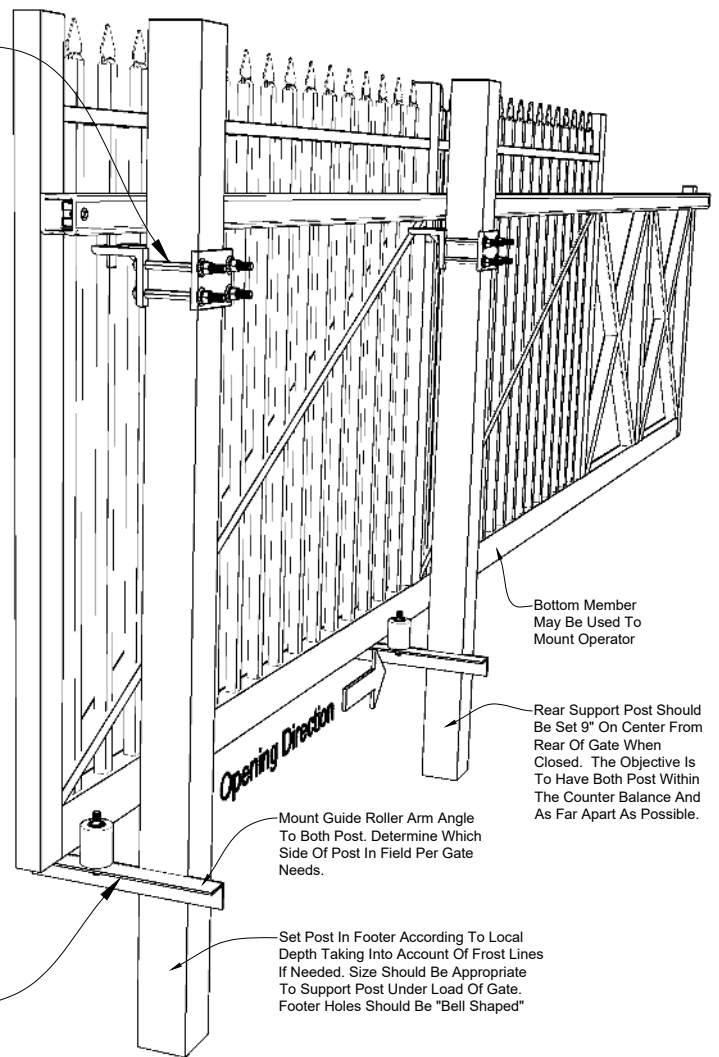
Detail Bottom Guide Roller
B-2 with Angle Mount



Detail Section View
A-2 @ Truck Assembly



Detail Section View
A-3 @ Guide Roller



Detail 3D View Of Cantilever
B-3 Gate Shown In Open Position

TOP TRACK Illustration Guide



DRAWING NOTES:

Installer Is Responsible For All Local And State Codes.

Checked By: _____

Order #: CAD Resource 1120 North Magnolia Ave Ocala, FL 34475

Customer Signature: _____

Drawn By: _____

Drawn Date: 1-Dec-22

Ph: 352.877.3888
Em: Info@AntebellumMFG.com